

WATER JERRY CAN HOLDER



SECURE & SAFE WATER STORAGE

When travelling off site for any great distance or travelling in remote areas it's good practice to carry extra water with the vehicle at all times. Water can help re-fill a leaking radiator, be used in an accident or emergency situation or even for the occupant in the case of a break down in areas when it will take time to get help.

Minecorp has designed a holder that carries the standard 20 or 22 litre Heavy Duty Water Container. It is designed with folded ribs for extra strength, and zinc primed and powder coated for high corrosion protection. The easy universal fitment allows the holder to be mounted in many situations to ensure the best position on a vehicle is chosen.

PRODUCT NUMBER

- **M79000098/S** : Water Container Holder - Tray Mount
- **M79000109/S** : Water Container Holder - Tub Mount
- **M79000129/S** : Optional Water Container Holder Lock Cable And Padlock
- **M79000144/S** : Optional Water Container Holder Steel Lock Arm & Padlock
- **M79000108*** : 22L Heavy Duty Water Container

FEATURES

- Water Holder includes, main holder bracket, safety strap and buckle & fitting kit
- Zinc primed and powder coated for high corrosion protection
- High sides for extra holding capability
- Locking options, steel lock arm with padlock or cable with padlock
- Suits Minecorp heavy duty 22L water container
- 2.5mm steel for strength
- Tub mountable holder includes brackets for simple installation

PACKAGED WEIGHT

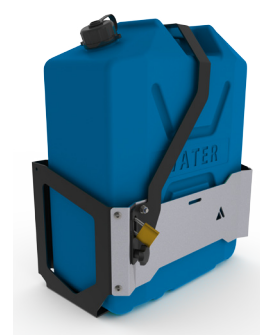
- 4.6KG (Holder Only)

NET WEIGHT

- 4.0KG (Holder Only)



**M79000129/S
(CABLE)**



**M79000144/S
(LOCK ARM)**

NOTE: Lock arm option is not compatible with smaller capacity containers.

*Not currently available for external sale - to be fitted by an auto electrician at Minecorp ONLY

DRIVING VALUE & COMPLIANCE THROUGH QUALITY MODIFICATIONS