

SWING OUT VICE MOUNT



OFF-SITE MAINTAINANCE MADE EASY

Minecorp has engineered heavy duty vice mounts for the use on the rear of a vehicles tray. These Minecorp mounts are designed to be used with either the 125mm or 150mm vices to suit most off-site working conditions.

The mounts have an easy to use pivot motion with a spring loaded locking bolt for placing the vice in a safe working or safe stored position. When in the stored position minimal tray space is used and the vice winds up to clamp on the anti-vibration locking arm. When in the working position the vice can over hang the tray making for easier and safer working techniques as you can get close access to the vice. Manufactured from 4mm steel, zinc primed and powder coated for high strength and corrosion protection the Minecorp vice mounts are the solution to all off-site maintenance vehicles.

PRODUCT NUMBER

M80000110/S : Mount Only - To Suit 150mm Dawn Vice

M80000111/S : Mount Only - To Suit 125mm Dawn Vice

M80000112/S : Mount With 150mm Dawn Vice Included

M80000113/S : Mount With 125mm Dawn Vice Included

M80000155/S : Mount with 125mm Multi Purpose Irwin Vice Included

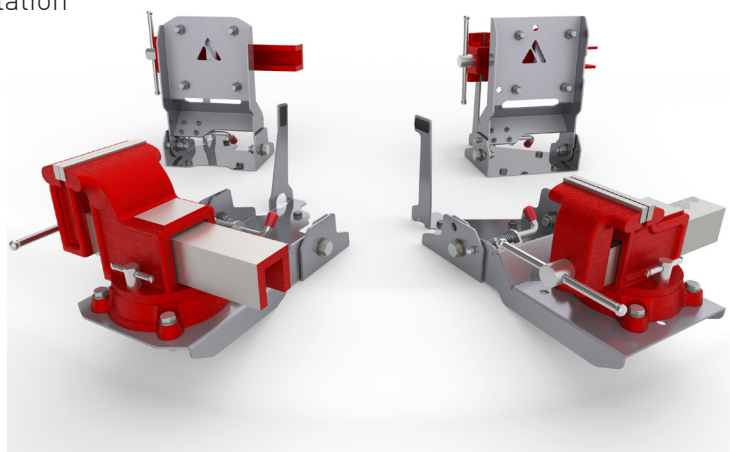
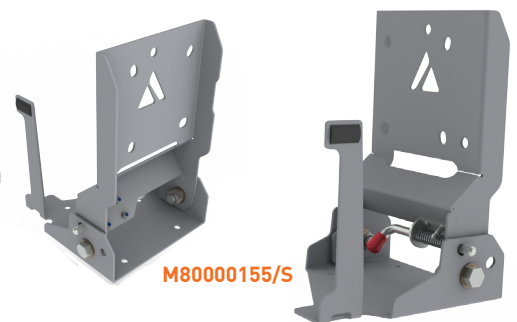
FEATURES

- Constructed from Marine Grade Aluminium Easy pivot motion allows to over hang tray for safer working techniques and minimal tray area
- 4mm steel used to give high strength
- Zinc plated high tensile bolts included in fitting kit
- Mount is zinc primed and powder coated for superior protection
- Spring loaded locking bolt for working and stored position
- Anti-vibration vice locking arm
- All mounts come with a fitting kit for installation

NET WEIGHT

- 6.90KG - 125mm or 150mm - Mount Only
- 23.90KG - 150mm Vice and Mount
- 19.90KG - 125mm Vice and Mount
- 8.20KG - Easy Pivot Vice Mount

NOTE: For packed weights, add 3.0KG



DRIVING VALUE & COMPLIANCE THROUGH QUALITY MODIFICATIONS