

HOLDEN COLORADO 2012+ GM INTEGRATED REAR UNDERBELLY PANEL



HIGH GRADE STEEL, MANUFACTURER CRASH SAFETY APPROVED

When taking any vehicle off road there is a significant risk of damage to the often exposed underbelly. Key components are susceptible to being struck or damaged by rough terrain. The all new Colorado Underbelly Armour from Minecorp has been developed alongside engineers at GM Holden to provide a strong and durable barrier to protect the vital workings of the vehicle.

Made from a high tensile 2.4mm steel, galvanised and powder coated for extreme performance in extreme conditions Minecorps OEM integrated rear sump plate is the **tough** product you need at the low price point you desire. Certified for safety and performance through GM FEA analysis and crash simulation, Minecorps strategic design and careful material selection allows for protection from some of the biggest impacts, without the significant impact on vehicle mass often seen in products boasting such durability. This design also promotes the exit of any contaminants, which can often stop vehicles used in extreme conditions in their tracks.

SEAMLESS INTEGRATION WITH OEM SYSTEMS

Installation is simple using the vehicles existing factory mount points so there's no need for drilling or welding. Retaining the OEM frontal plates whilst replacing the rearmost plate directly under the sump allows Minecorps Underbelly Armour to protect the most vital point of the vehicles underside at little cost

PRODUCT NUMBER

- **M60130023/S**

FEATURES

- Provides unparalleled protection to the vehicles sump
- Primed and powder coated for high surface/corrosion protection
- Strategically vented, negating effects of built up contaminants and keeping operating temperatures low
- Utilises all factory mount points and integrates with some factory plates to ensure quick and easy fitting
- Fitting instructions included

PACKAGED WEIGHT

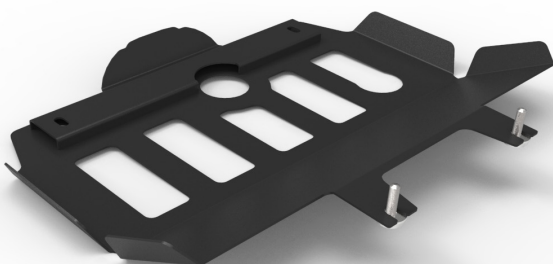
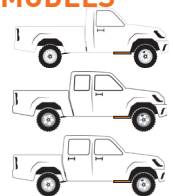
- 7KG

NET WEIGHT

- 5.8KG

FOR USE WITH THE FOLLOWING MODELS

- 2012+ 4x4 Single Cab
- 2012+ 4x4 Space (Extra) Cab
- 2012+ 4x4 Crew (Dual) Cab



DRIVING VALUE & COMPLIANCE THROUGH QUALITY MODIFICATIONS

