

# SIDE STEP FOR LH & RH FORD PX RANGER 2011+ SINGLE/DUAL

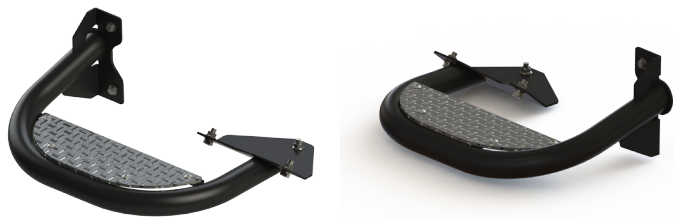


## A SMALL STEP UP FOR GREATER ACCESS

Accessing a canopy roof or a MCT ladder rack need not be a struggle or injury risk with Minecorp's Side Steps. Minecorp have designed the steps specifically for the Ford PX Ranger. Simply bolted to the vehicles chassis through OE holes, this accessory is available to order individually for the left hand side or right hand side of the vehicle. Steps for both the Single Cab and Dual Cab are available. Finished in a sahara black powder coating for a professional finish. The steps features a large checker plate platform, which is securely riveted to the frame of the step for superior strength.

### FEATURES

- Simple installation; steps bolt into OE holes in the chassis rails
- Checker plate platform gives greater grip
- Step frame is blast, prime and powder coated in Sahara black for durability and professional finish
- Available for both Single and Dual Cab



PRODUCT DESCRIPTION	VEHICLE	CAB TYPE	PART NUMBER	WEIGHT
LH Side Step	Ford PX Ranger 2011+	Single Cab	<b>M60070055/S</b>	5.10 KG
RH Side Step			<b>M60070056/S</b>	
Side Step Kit LH & RH			<b>M60070057/S</b>	10.20 KG
Side Step Kit LH & RH with Grab Handles			<b>M60070058/S</b>	10.70 KG
LH Side Step		Dual Cab	<b>M60070059/S</b>	5.10 KG
RH Side Step			<b>M60070060/S</b>	
Side Step Kit LH & RH			<b>M60070061/S</b>	10.20 KG
Side Step Kit LH & RH with Grab Handles			<b>M60070062/S</b>	10.70 KG



### DRIVING VALUE & COMPLIANCE THROUGH QUALITY MODIFICATIONS